



B.K. BIRLA CENTRE FOR EDUCATION

SARALA BIRLA GROUP OF SCHOOLS
A CBSE DAY-CUM-BOYS' RESIDENTIAL SCHOOL



PERIODIC TEST-I 2025-26 BIOLOGY

Class: XII

Date: 01.07.25

Admission no:

Time: 1 hour

Max Marks: 25

Roll no:

General Instructions:

- This question paper consists of 13 questions in 3 sections.
- Section A consists of 5 objective-type questions carrying 1 mark each.
- Section B consists of 4 Very Short questions carrying 02 marks each.
- Section C consists of 4 Short Answer questions with 03 marks each.

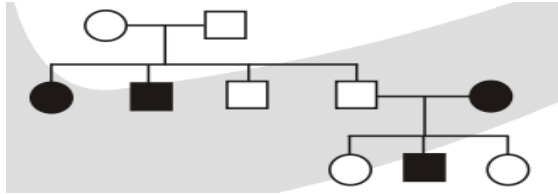
Section A

1. Given below are four contraceptive methods and their modes of action. Select the correct match: 1

S. No.	Method	S. No	Mode of action
a)	Condom	(i)	Ovum not able to reach Fallopian tube
b)	Vasectomy	(ii)	Prevents ovulation
c)	Pill	(iii)	Prevents sperm reaching the cervix
d)	Tubectomy	(iv)	Semen contains no sperms

- (a) a)–(i) b)–(ii) c)– (iii) d)–(iv)
 (b) a)–(ii) b)–(iii) c)–(iii) d) –(i)
 (c) a)–(iii) b)–(iv) c)–(ii) d)–(i)
 (d) a)–(iv) b)–(i) c)– (iii) d)–(ii)

2. F₂ generation in a mendelian cross showed that both genotype and phenotype ratios are same as 1:2:1. It represent a case of: 1
- Co-dominance
 - Dihybrid cross
 - Monohybrid cross with incomplete dominance.
 - Monohybrid cross with complete dominance.
3. Which of the following is a dominant trait chosen by Mendel for pea plant? 1
- Green pod
 - Yellow pod
 - Constricted pod
 - Green seed
4. Progestasert is an IUD which makes the uterus unsuitable and cervix hostile to the sperms as they are 1
- Copper releasing IUD
 - Hormone releasing IUD
 - Non-medicated IUD
 - Both (a) and (c)
5. The pedigree chart given below depicts: 1



- a) Autosomal recessive
- b) Autosomal dominant
- c) Sex-linked recessive
- d) None of these

Section B

6. What is amniocentesis? 2
7. Write any four features of an ideal contraceptive? 2
8. 'Prevention is better than cure'. Justify the statement in context of STDs. 2
9. Mention any two chromosomal genetic disorders with their symptoms. 2

Section C

10. Explain any three assisted reproductive technologies (ART) . 3
11. a) A man with blood group 'A' marries a woman with blood group 'AB'. The first child born to them has blood group 'B'. Work out a cross to find the genotype of the father. Give the possible blood groups and their genotypes of the children that could be born to this couple. (Use a Punnett square). 3
b) State the basis of 'ABO' blood grouping in humans.
12. Explain the following terms with example. 3
a) Dominance
b) Co-dominance
c) Incomplete dominance
13. Explain the chromosomal theory of inheritance. 3

*****ALL THE BEST*****